



LOOK OUT FOR  
OUR SWEAT SHOP  
BEER MATCHES

## START OR SHARE

**HOPPY FLATBREAD** | garlic | mozzarella 12.5

**SMOKED BRISKET SPRING ROLLS** | kimchi 17.5

**CRISPY BUTTERMILK CHICKEN** | hot sauce | blue cheese mayo 17.5

**JALAPEÑO + BACON CROQUETTES** | house gravy 12.5

**SMOKED SALMON** | 6 hour Manuka cold-smoked | capers | red onion | smoked lemon cheese curd | charcoal mayo | beer crackers 18.9

**SOUTHERN SPICED SQUID** | chipotle aioli | mango salsa | sprouted mung bean | sriracha 15.9

**LOADED SMOKED WEDGES** | pulled pork | tasty cheese | sweet kimchi sauce 19.5 **APA**

**CAJUN SPICED POPCORN PRAWNS** | burnt lemon aioli 17.5 **LAGER**

**CHARRED CAULIFLOWER** | lemon cheese curd | sprouted seeds | nuts | black garlic 14.9

**ST LOUIS RIB FINGERS** | Applewood smoked | BBQ bourbon sauce | pickle dressed slaw 18.9

**CRISPY PORK BELLY** | corn salsa | charcoal mayo 17.5

**MAC + CHEESE MORSELS** | chipotle mayo 12.5

## WITH BREAD

**CHICKEN WAFFLE CONE** | crispy buttermilk chicken | cheese sauce | pickled veg | hot sauce | chicken crackle 18.5

**THE GANGSTER AMERICAN DOG** | 6" roll | frankfurter | smoked beef jerky | jalapeño mayo | American cheese | sauerkraut | pickles | American mustard | tomato sauce | smoked wedges 16.5 **APA**

**MANUKA SMOKED TURKEY ROLL** | apricot slaw | corn salsa 18.5

**SWEAT SHOP BEER INFUSED BURGER** | beer infused ¼ pound beef patty | brioche | lettuce | red onion | pickles | beer mustard | blue cheese mayo 18.5 **IPA**

**FISH TACO** | pan-fried market fish | burnt lemon mayo | corn salsa | cos | tortilla 19.5

## SALAD

**WINTER WARMER SALAD** | pickled rhubarb | smoked baba ghanoush | crispy leek | roast swedes | kale | seeds | roast pumpkin | quinoa | green apple vinaigrette 18.9

**SMOKED TURKEY** | grilled corn | pickled onion | baby spinach | glazed parsnip | hazelnuts | sundried tomato | juniper + apricot vinaigrette 23.9

**CRISPY CHICKEN** | torn lettuce | chicken crackle | shaved parmesan | pickled rhubarb | cajun spiced croutons | poached deep-fried egg 23.9

## PIZZA

**SMOKED CHICKEN** | mozzarella | red onion | spinach | mango chutney 23.9

**TEXAS** | chilli beef | jalapeño | bacon | grilled pepper | mozzarella 23.9

**AMERICAN PEPPERONI** | mozzarella | grilled pepper | mustard mayo 23.9

**MARGHERITA** | fior di latte mozzarella | tomato | basil 23.9

**SMOKED SALMON** | capers | red onion | dill + anchovy mayo 23.9

**VEGAN** | artichokes | grilled courgette | mushroom | spinach | cashew nut dressing | rocket 23.9

**PULLED PORK** | grilled shallots | butternut pumpkin | mozzarella | spiced plum 23.9

**CHICAGO DEEP DISH** | ground beef | pizza sauce | pork + fennel sausage | mozzarella | béchamel | parmesan 26.5

## MAINS

**CRISPY PORK BELLY** | pickled rhubarb | smoked golden beetroot | confit potatoes | plum jus 27.9

**SEARED SMOKED SALMON** | potato galette | pan-fried kale | capers | beurre blanc sauce 29.9

**250G SCOTCH FILLET** | confit potatoes | charred seasonal greens | mushroom + black garlic whip | red wine jus 37.5

**TWICE COOKED LAMB SHOULDER** | baba ghanoush | beer onions | crispy leek | pickled red onion | charred cauliflower | stout jus 29.9

**SWEAT SHOP BEER BATTERED FISH + CHIPS** | tartare | side salad 24.9

**CAJUN CAULIFLOWER STEAK** | lemon cheese curd | poached fried egg | Kale | pickled rhubarb | roasted swede | seeds 24.9

## SMOKEHOUSE

SOUTHERN USA STYLE BBQ MEATS



We use fresh house-smoked salts and a secret dry spice rub. Our smoker is fuelled by sustainably sourced wood chips soaked in our very own Sweat Shop brews.

**\$27.9ea**

**ALL SMOKEHOUSE TRAYS ARE SERVED WITH:**  
slaw | flat bread | potato tots

**BRISKET** | 12 hour Manuka smoked | red wine jus **APA**

**PORK RIBS ½ RACK** | Applewood smoked | BBQ bourbon sauce  
Upgrade to full rack **ADD 15.9**

**BEER CAN CHICKEN ¼** | cooked for 3 hours Sweat Shop Lager | BBQ kimchi **PILSNER**

**APPLEWOOD SMOKED LAMB SHOULDER** | stout jus

**MANUKA SMOKED TURKEY** | apricot habanero

**PULLED PORK** | 12 hour Manuka smoked | BBQ bourbon sauce



**Extra side of smokehouse meat 11.5** (not including ribs)

**Sauces 2.5ea** | BBQ kimchi | APA mint jus | BBQ bourbon | red wine jus



## BEER CHICKEN VARIETY BOX

**Whole Chicken** | gravy | roast spuds | slaw | bread rolls | **FEEDS FOUR 60.0**

**Half Chicken** | gravy | roast spuds | slaw | bread rolls | **FEEDS TWO 35.0**

## BIG SHARING

**KITCHEN PLATTER** | 48 hour smoked beef brisket | ½ rack pork ribs | pulled pork | sliced smoked chicken | beer mustard | onion jam | blue cheese mayo | house slaw | hoppy flatbreads 48.5

**BREWER'S PLATTER** | southern style squid | grit sticks | jalapeño + bacon croquettes | crispy buttermilk chicken | mac + cheese morsels | BBQ, aioli + hot sauce | hoppy flatbreads 48.5

**Chips** | aioli | **SMALL 6.0** | **LARGE 9.0**

**Potato Tots 8.0**

**Grit Sticks 8.0**

**House Slaw 7.0**

**Confit Baby Potatoes 7.0**

**Charred Seasonal Greens 8.0**

**Crispy Chicken Skin 5.0**

**Pork Scratching 5.0**

**Smoked Beef Jerky 5.0**

## SAUCES

2.5ea

sriracha | BBQ | chipotle |

hot sauce | aioli



## SWEET SHOP

**THE CARNIVAL** | rocky road | berry coulis | fudge ice cream cone | gummy aeroplanes | caramel popcorn 12.0

**BANOFFEE PARCEL** | white chocolate | banana | Galliano + espresso caramel sauce 12.0

**CHOCOLATE BRÛLÉE** | peanut butter + chocolate brownie wafer 12.0

**APPLE DOUGHNUT** | white chocolate ice-cream | blueberry jelly 12.0



WE DON'T TRY TO WIN AWARDS;  
WE JUST BREW GOOD BEER.  
JUST SO HAPPENS THEY'RE GOOD  
ENOUGH TO WIN AWARDS.

## HEAD BREWER: PADDY MOLLOY

GLASS **10.8**

PITCHER **41.0**

TASTING PADDLE **16.0** — A TASTING TRAY OF 3 SSB BEERS

RIGGER **20.5** — A 1.25L BOTTLE TO TAKE HOME

### LAGER | 5.0%

COLOUR | Light straw  
NOSE | Light malt aroma  
TASTE | Crisp, clean, dry

### PILSNER | 5.0%

COLOUR | Pale straw  
NOSE | Floral, grassy hops  
TASTE | Clean, crisp, lingering bitterness

### SESSION ALE | 3.5%

COLOUR | Deep golden  
NOSE | Lightly hopped  
TASTE | Full body, floral hops, balanced

### IPA | 6.0%

COLOUR | Light copper  
NOSE | Sweet citrus, tropical hops  
TASTE | Hop forward, balanced, moderate bitterness

### APA | 6.0%

COLOUR | Amber  
NOSE | Fruity, floral, grassy  
TASTE | Hop forward, biscuit, assertive bitterness

### BREWER'S CHOICE

We're always brewing something new - just ask us for our latest creation.

Are you passionate about beer? Every Wednesday at 3pm our brewer will be on hand to teach you all about beer and how we make ours taste as good as they do.

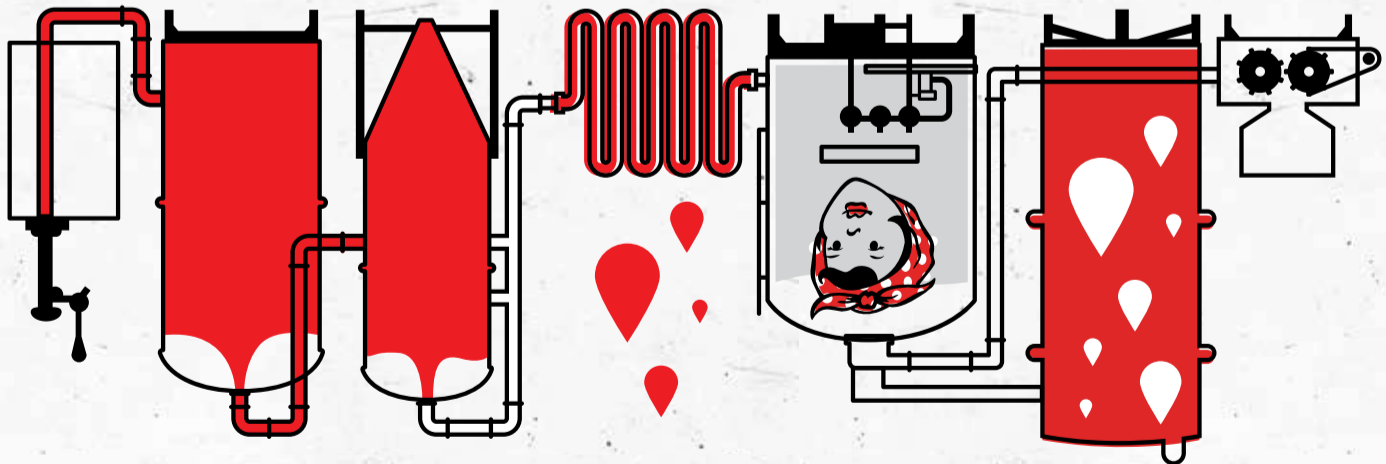
Can't get 3pm Wednesday over the line with the boss? No worries - get in touch with us to organise your own private experience at a time that suits. Perfect for everything from weekend outings to a lad's craft afternoon.

## EVERY WEDNESDAY AT 3PM

(AND SOME BEER)

*Get a real-life brewery experience!*

T-SHIRTS + HATS \$25  
LIMITED EDITION



Our humble brewery is home to an absolute legend of a brewer, Paddy Molloy, who has years of experience getting his head, heart and hands into all things beer. With each sip of our fresh made-right-here beer, you'll be able to taste the craftsmanship and the passion that's gone into each and every brew.

we honour that heritage with our very own hard-working craft brewery, Sweat Shop Brew Kitchen.

Our heritage begins way back in the early 1920s when this very building was home to Ross & Glending Ltd, a NZ clothing manufacturer. Ever since, this building has been a place of heat, noise and commotion, and today

# The Brewery

# SMALLS

**HOPPY FLATBREAD** | garlic | mozzarella 12.5

**SMOKED BRISKET SPRING ROLLS** | kimchi 17.5

**CRISPY BUTTERMILK CHICKEN** | hot sauce | blue cheese mayo 17.5

**JALAPEÑO + BACON CROQUETTES** | house gravy 12.5

**SMOKED SALMON** | 6 hour Manuka cold-smoked | capers | red onion | smoked lemon cheese curd | charcoal mayo | beer crackers 18.9

**SOUTHERN SPICED SQUID** | chipotle aioli | mango salsa | sprouted mung bean | sriracha 15.9

**LOADED SMOKED WEDGES** | pulled pork | tasty cheese | sweet kimchi sauce 19.5  **APA**

**CAJUN SPICED POPCORN PRAWNS** | burnt lemon aioli 17.5  **LAGER**

**CHARRED CAULIFLOWER** | lemon cheese curd | sprouted seeds | nuts | black garlic 14.9

**CRISPY PORK BELLY** | corn salsa | charcoal mayo 17.5

## Kitchen Platter

48 hour smoked beef brisket | ½ rack pork ribs | pulled pork | sliced smoked chicken | beer mustard | onion jam | blue cheese mayo | house slaw | hoppy flatbreads | 48.5

# SMOKEHOUSE


SOUTHERN USA STYLE BBQ MEATS.



We use fresh house-smoked salts and a secret dry spice rub. Our smoker is fuelled by sustainably sourced wood chips soaked in our very own Sweat Shop brews.

**\$27.9ea**


**ALL SMOKEHOUSE TRAYS ARE SERVED WITH:**  
slaw | flat bread | potato tots

**BRISKET** | 12 hour Manuka smoked | red wine jus  **APA**


**PORK RIBS ½ RACK** | Applewood smoked | BBQ bourbon sauce  
Upgrade to full rack **ADD 15.9**

# CLASSICS

**CHICKEN WAFFLE CONE** | crispy buttermilk chicken | cheese sauce | pickled veg | hot sauce | chicken crackle 18.5

**THE GANGSTER AMERICAN DOG** | 6" roll | frankfurter | smoked beef jerky | jalapeño mayo | smoked cheddar | American cheese | sauerkraut | pickles | American mustard | tomato sauce | wedges 16.5  **APA**

**MANUKA-SMOKED TURKEY ROLL** | apricot slaw | corn salsa 18.5

**SWEAT SHOP BEER INFUSED BURGER** | beer infused ¼ pound beef patty | brioche | lettuce | red onion | pickles | beer mustard | blue cheese mayo 18.5  **IPA**

**FISH TACO** | pan-fried market fish | burnt lemon mayo | corn salsa | cos | tortilla 19.5

**SWEAT SHOP BEER BATTERED FISH + CHIPS** | tartare | side salad 24.9

**WINTER WARMER SALAD** | pickled rhubarb | smoked baba ghanoush | crispy leek | roast swede | kale | seeds | roast pumpkin | quinoa | green apple vinaigrette 18.9

**SMOKED TURKEY SALAD** | grilled corn | pickled onion | baby spinach | glazed parsnip | hazelnuts | sundried tomato | juniper + apricot vinaigrette 23.9

**CRISPY CHICKEN SALAD** | torn lettuce | chicken crackle | shaved parmesan | pickled rhubarb | cajun spiced croutons | poached deep-fried egg 23.9

# PIZZA

(10" FOR 10.0 BUCKS)

**SMOKED CHICKEN** | mozzarella | red onion | spinach | mango chutney

**AMERICAN PEPPERONI** | mozzarella | grilled pepper | mustard mayo

**MARGHERITA** | fior di latte mozzarella | tomato | basil

**VEGAN** | artichoke | grilled courgette | mushroom | spinach | cashew nut dressing | rocket

## Sides

**Chips** | aioli | **SMALL 6.0 | LARGE 9.0**

**Potato Tots 8.0**

**Grit Sticks 8.0**

**House Slaw 7.0**

**Confit Baby Potatoes 7.0**

**Charred Seasonal Greens 8.0**

**Crispy Chicken Skin 5.0**

**Pork Scratching 5.0**

**Smoked Beef Jerky 5.0**

# SWEET SHOP

**CHOCOLATE BRÛLÉE** | peanut butter & chocolate brownie wafer 12.0

**APPLE DOUGHNUT** | white chocolate ice-cream | blueberry jelly 12.0



LOOK OUT OUR FOR OUR  
SWEAT SHOP BEER MATCHES



BREWED ON SITE BY OUR BREWER **PADDY MOLLOY**

GLASS **10.8** | PITCHER **41.0** | TASTING PADDLE **16.0**

## LAGER 5.0%

<b>COLOUR</b>	LIGHT STRAW
<b>NOSE</b>	LIGHT MALT AROMA
<b>TASTE</b>	CRISP, CLEAN, DRY

## PILSNER 5.0%

<b>COLOUR</b>	PALE STRAW
<b>NOSE</b>	FLORAL, GRASSY HOPS
<b>TASTE</b>	CRISP, CLEAN, LINGERING BITTERNESS

## SESSION ALE 3.5%

<b>COLOUR</b>	DEEP GOLDEN
<b>NOSE</b>	LIGHTLY HOPPED
<b>TASTE</b>	FULL BODY, BALANCED, FLORAL HOPS

## IPA 6.0%

<b>COLOUR</b>	LIGHT COPPER
<b>NOSE</b>	SWEET CITRUS, TROPICAL HOPS
<b>TASTE</b>	HOP FORWARD, BALANCED, MODERATE BITTERNESS

## APA 6.0%

<b>COLOUR</b>	AMBER
<b>NOSE</b>	FRUITY, FLORAL, GRASSY
<b>TASTE</b>	HOP FORWARD, BISCUIT, ASSERTIVE BITTERNESS

## BREWER'S CHOICE

**ASK US FOR OUR LATEST  
CRAFT BEER**

**TAKE HOME A RIGGER 1.25 LITRE 20.5**

## CRAFT ON TAP

- TUATARA (ROTATING)
- BLACK DOG (ROTATING)
- LAGUNITAS (ROTATING)
- SWEAT SHOP LAGER
- SWEAT SHOP PILSNER
- SWEAT SHOP APA
- SWEAT SHOP IPA
- SWEAT SHOP BREWER'S CHOICE

## DRAUGHT BEER

- HEINEKEN
- TIGER
- MONTEITH'S BARBER LAGER
- MONTEITH'S POINTERS PALE ALE

## DRAUGHT CIDER

- MONTEITH'S CRUSHED APPLE
- OLD MOUT HARD CIDER

## BOTTLED CIDER

- MONTEITH'S CRUSHED PEAR
- REKORDERLIG RANGE

## BOTTLED BEER

- HEINEKEN
- SOL
- TIGER
- MONTEITH'S RADLER
- MONTEITH'S BEACON PILSNER
- MONTEITH'S ORIGINAL
- MONTEITH'S BLACK
- MONTEITH'S POINTERS PALE ALE

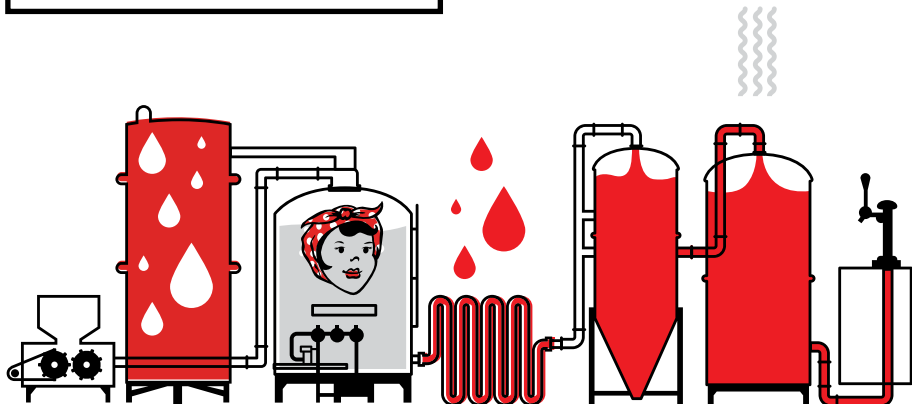
## LOWER ALCOHOL

### DRAUGHT

- SWEAT SHOP SESSION ALE 3.5%
- HEINEKEN LIGHT 2.5%

### BOTTLED

- HEINEKEN LIGHT 2.5%
- AMSTEL LIGHT 2.5%
- EXPORT CITRUS 0.0%
- EXPORT CITRUS LEMON 2.0%
- MONTEITH'S LIGHTLY CRUSHED CIDER 2.8%



## CHAMPAGNE & SPARKLING

CHAMPAGNE	FLUTE	½ BTL	BTL
<b>G.H. MUMM CORDON ROUGE</b> REIMS			99.0
<b>VEUVE CLICQUOT YELLOW LABEL BRUT</b> REIMS			130.0
<b>POL ROGER BRUT</b> FRANCE			150.0
<b>PIPER HEIDSIECK</b> FRANCE	24.0	72.0	120.0
SPARKLING			
<b>MIONETTO PRESTIGE PROSECCO</b> VENETO	10.5		50.0
<b>MIONETTO ROSE PROSECCO</b> VENETO	10.5		50.0
<b>BRANCOTT ESTATE BRUT CUVÉE</b> MARLBOROUGH			45.0

## SAUVIGNON BLANC

	REG	LRG	BTL
<b>STRAW ISLAND</b> NEW ZEALAND	8.5	14.0	39.0
<b>THE MAKER FLEUR DE LIS</b> MARLBOROUGH	9.5	15.0	44.0
<b>TOREA</b> MARLBOROUGH	10.0	16.0	46.0
<b>BRANCOTT FLIGHT LOW ALCOHOL 9%</b> MARLBOROUGH	11.0	18.0	52.0
<b>CARRICK</b> CENTRAL OTAGO	11.5	19.0	55.0
<b>MILLS REEF RESERVE</b> HAWKE'S BAY	12.0	20.0	58.0
<b>MAN O' WAR ESTATE</b> WAIHEKE ISLAND	12.5	21.0	61.0

## CHARDONNAY

<b>STRAW ISLAND</b> NEW ZEALAND	8.5	14.0	39.0
<b>THE MAKER KNIGHTHOOD</b> GISBORNE	9.5	15.0	44.0
<b>ARA SINGLE ESTATE</b> MARLBOROUGH	10.5	17.0	49.0
<b>WAIPARA HILLS</b> WAIPARA	11.5	19.0	55.0
<b>CHARLES SMITH EVE</b> WASHINGTON	12.5	21.0	61.0
<b>CHARD FARM CLOSEBURN</b> CENTRAL OTAGO	13.5	23.0	67.0

## PINOT GRIS

<b>STRAW ISLAND PINOT GRIS</b> NEW ZEALAND	8.5	14.0	39.0
<b>THE MAKER DIVINITY CROSS PINOT GRIS</b> MARLBOROUGH	9.5	15.0	44.0
<b>BABYDOLL PINOT GRIS</b> MARLBOROUGH	9.5	15.5	45.0
<b>SOHO GEN-Y ZIGGY PINOT GRIS</b> MARLBOROUGH	10.5	17.0	49.0
<b>BOUNDARY VINEYARDS PAPER LANE PINOT GRIS</b> HAWKE'S BAY	11.5	19.0	55.0
<b>MATAWHERO SINGLE VINEYARD PINOT GRIS</b> GISBORNE	12.0	20.0	58.0
<b>PETER YEALANDS PINOT GRIS LIGHTER ALCOHOL 9%</b> MARLBOROUGH	9.0	15.0	44.0

## AROMATICS

	REG	LRG	BTL
<b>MAIN DIVIDE RIESLING</b> WAIPARA	12.0	20.0	58.0
<b>GIESEN REISLING STANDARD</b> MARLBOROUGH	11.0	18.0	52.0

## ROSÉ

<b>STRAW ISLAND</b> NEW ZEALAND	8.5	14.0	39.0
<b>BABYDOLL</b> MARLBOROUGH	9.5	15.5	45.0
<b>VILLA MARIA CELLAR SELECTION</b> MARLBOROUGH	10.5	17.0	49.0
<b>GIESEN</b> MARLBOROUGH	11.0	18.0	52.0
<b>WAIPARA HILLS</b> WAIPARA	12.0	20.0	58.0
<b>WILD GRACE</b> CENTRAL OTAGO	13.0	22.0	68.0

## PINOT NOIR

<b>THE MAKER FIRE EAGLE</b> MARLBOROUGH	9.5	15.0	44.0
<b>LEFT FIELD</b> MARLBOROUGH	10.5	17.0	49.0
<b>GEYSER PEAK</b> CALIFORNIA	11.0	18.0	52.0
<b>WAIPARA</b> WAIPARA	12.0	20.0	58.0
<b>TE KAIRANGA ESTATE</b> MARTINBOROUGH	13.0	22.0	65.0
<b>RABBIT RANCH</b> CENTRAL OTAGO	14.0	23.5	68.0

## MERLOT

<b>STRAW ISLAND</b> NEW ZEALAND	8.5	14.0	39.0
<b>MUD HOUSE</b> HAWKE'S BAY	10.5	17.0	49.0
<b>TE MATA ESTATE VINEYARDS MERLOT CABERNET</b> HAWKE'S BAY	12.0	20.0	58.0

## CABERNET

<b>ROBERT MONDAVI PRIVATE SELECTION CABERNET SAUVIGNON</b> CALIFORNIA	10.5	17.0	49.0
<b>WIRRA WIRRA CHURCH BLOCK CABERNET SHIRAZ MERLOT</b> MCLAREN VALE	12.0	20.0	58.0

## SHIRAZ/SYRAH

<b>TEMPUS TWO SILVER SERIES SHIRAZ</b> HUNTER VALLEY	10.0	16.0	46.0
<b>ST HALLETT GAMEKEEPERS RESERVE SHIRAZ GRENACHE</b> BAROSSA VALLEY	11.5	19.0	55.0
<b>CHARLES SMITH BOOM BOOM! SYRAH</b> WASHINGTON	12.5	21.0	61.0
<b>MILLS REEF RESERVE SYRAH</b> GIMBLETT GRAVELS	13.0	22.0	65.0

## OTHER REDS

<b>CHAKANA MALBEC</b> MENDOZA	10.5	17.0	49.0
-------------------------------	------	------	------

# Sweat Shop Cocktails

## ANA'S SLOE HAZE

SLOE GIN, VANILLA LIQUEUR, BLACKBERRY LIQUEUR, LEMON JUICE,  
FRESH BLACKBERRIES, TOPPED WITH SODA WATER **18.0**

## ESPRESSO MARTINI

WHIPPED CREAM VODKA, DE KUYPER BUTTERSCOTCH LIQUEUR,  
FRESH ESPRESSO **18.0**

## KENTUCKY PEACH TEA

WOODFORD RESERVE DOUBLE OAKED BOURBON, LEMON JUICE,  
PEACH TEA SYRUP, TOPPED WITH LEMONADE **18.0**

## STRAWBERRY & GINGER MOJITO

MOUNT GAY SILVER RUM, STRAWBERRIES, LIME, MINT,  
TOPPED WITH GINGER BEER **18.0**

## BITTER SWEET SYMPHONY

THE BOTANIST GIN, COINTREAU, CRANBERRY JUICE,  
LIME JUICE, WATERMELON SYRUP **18.0**

## RASPBERRY BERET

MOUNT GAY SILVER RUM, RASPBERRY VODKA, PEAR LIQUEUR,  
LIME JUICE, APPLE JUICE, RASPBERRIES **18.0**

## KIWI HOMBRE

HERRADURA PLATA TEQUILA, FRESH KIWIFRUIT, KWAI FEH LYCHEE LIQUEUR,  
ELDERFLOWER LIQUEUR, APPLE JUICE, LEMON JUICE **18.0**

# Trust us.

ASK YOUR BARTENDER FOR ONE OF  
THEIR OWN, OR ONE OF THE CLASSICS.



## GUILT FREE LIBATIONS

### ANTIPODES WATER

STILL + SPARKLING  
500ML 6.0 / 1LTR 11.0

'C' ORGANIC COCONUT  
WATER 7.0

## THIRST QUENCHERS

### JUICE

APPLE | CRANBERRY |  
GRAPEFRUIT | ORANGE |  
PINEAPPLE |  
SPICED TOMATO | TOMATO

### SOFT DRINKS

### ENERGY

RED BULL |  
RED BULL SUGAR FREE

### BUNDABERG GINGER BEER

### EXPORT CITRUS 0.0%

### ALLGANICS ORGANIC

**SPARKLING JUICE 275ML**  
POMEGRANATE + CRANBERRY |  
APPLE + BLACKCURRANT

### ALLGANICS ORGANIC

**ICED TEA 330ML**  
MANGO + GREEN TEA |  
PEACH + BLACK TEA

## COFFEE + TEA

FLAT WHITE

ESPRESSO

LONG BLACK

MACCHIATO

CAPPUCCINO

MOCHACCINO

LATTE

CHAI LATTE

HOT CHOCOLATE

KIDS HOT CHOCOLATE

FLUFFY

ENGLISH BREAKFAST

EARL GREY

GREEN

CHAMOMILE

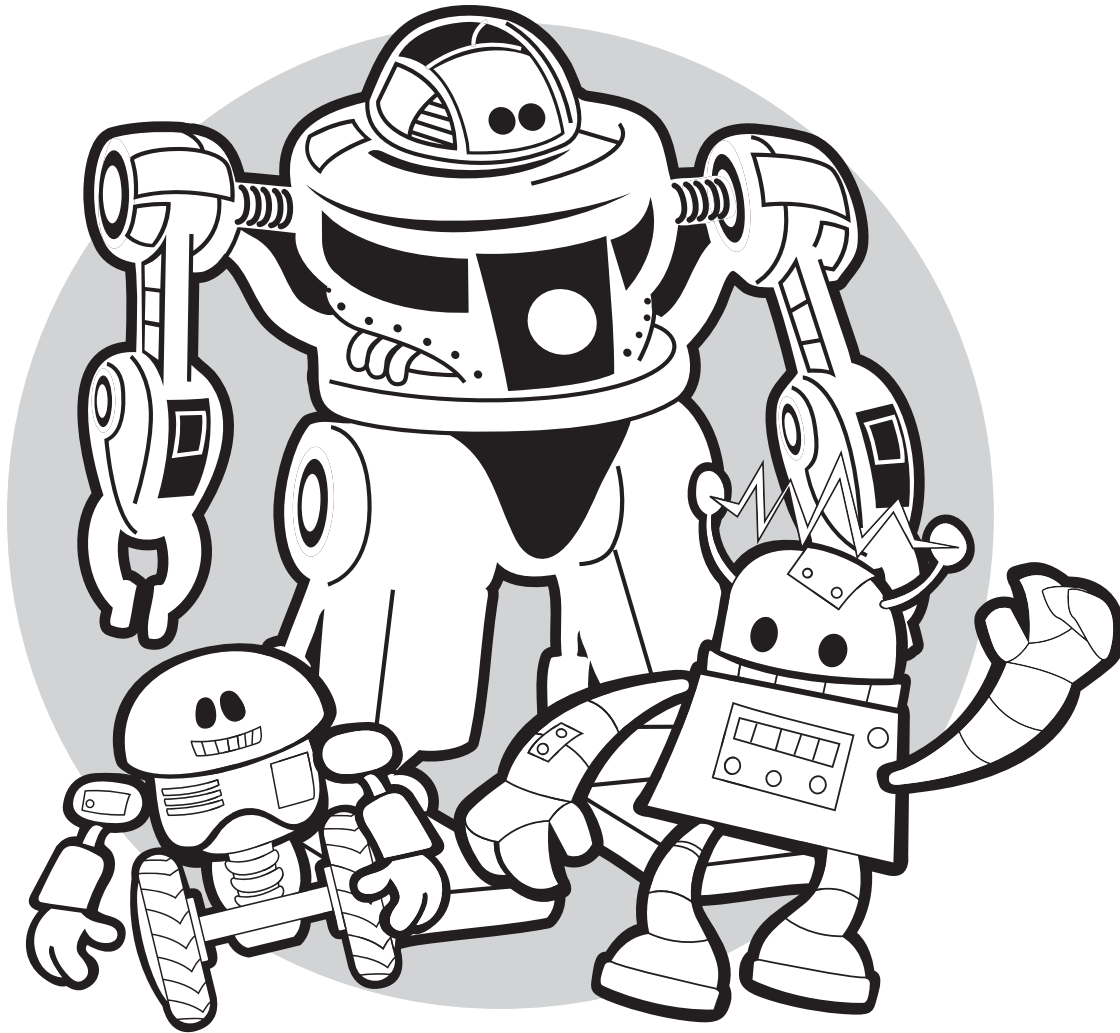
*Feeling  
hungry?*

**WE ALWAYS HAVE  
FOOD AVAILABLE.**

**ASK FOR OUR MENU.**

**TAKE  
ME  
HOME**



LIMITED EDITION  
**T-SHIRTS + HATS \$25**



COLOUR IN OUR HARD WORKING

**ROBOTS**

## KID'S MAINS 12 YEARS + UNDER

<b>CHICKEN BURGER</b>   BRIOCHE BUN   SLAW   CHIPS   HOUSE-MADE TOMATO SAUCE	12.5
<b>SMOKEHOUSE RIBS</b>   POTATO TOTS   SLAW	12.5
<b>FISH + CHIPS</b>   HOUSE-MADE TOMATO SAUCE	12.5
<b>PULLED PORK</b>   ROAST POTATO   SEASONAL GREENS 	12.5
<b>CHICKEN + BACON PIZZA</b>   HOUSE-MADE TOMATO SAUCE   MOZZARELLA CHEESE	12.5
<b>HAM + PINEAPPLE PIZZA</b>   HOUSE-MADE TOMATO SAUCE   MOZZARELLA CHEESE	12.5
<b>PAN-FRIED FISH TACO</b>   SLAW   CORN SALSA 	12.5

## KID'S DESSERTS

<b>SUNDAE</b>   FUDGE ICE CREAM   VANILLA ICE CREAM   JAFFAS   CHOCOLATE SAUCE   SNAKE LOLLIES	8.0
<b>BROWNIE</b>   ICE CREAM   CHOCOLATE SAUCE	8.0

### KIDS CHOICE

It can be hard work for any parent trying to get their kids to make healthy choices but the NZ Heart Foundation's Kids' Choice logo makes it easy, as all menu items with the logo are both yummy and healthy.

**SWEATSHOPBREW.CO.NZ**